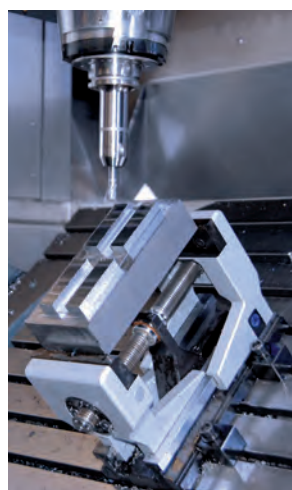
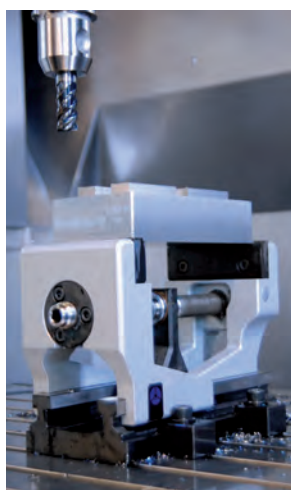


IDEAL FOR 5-AXIS MACHINING



Without additional foundations or special jaws, the RZM centric vice holds the workpiece securely – and does this with a minimal interference contour. The clamping spindle is located very close to the workpiece, creating an effective force flow and providing an extremely rigid clamping. The patented guide system of the jaws makes a very large clamping range possible.



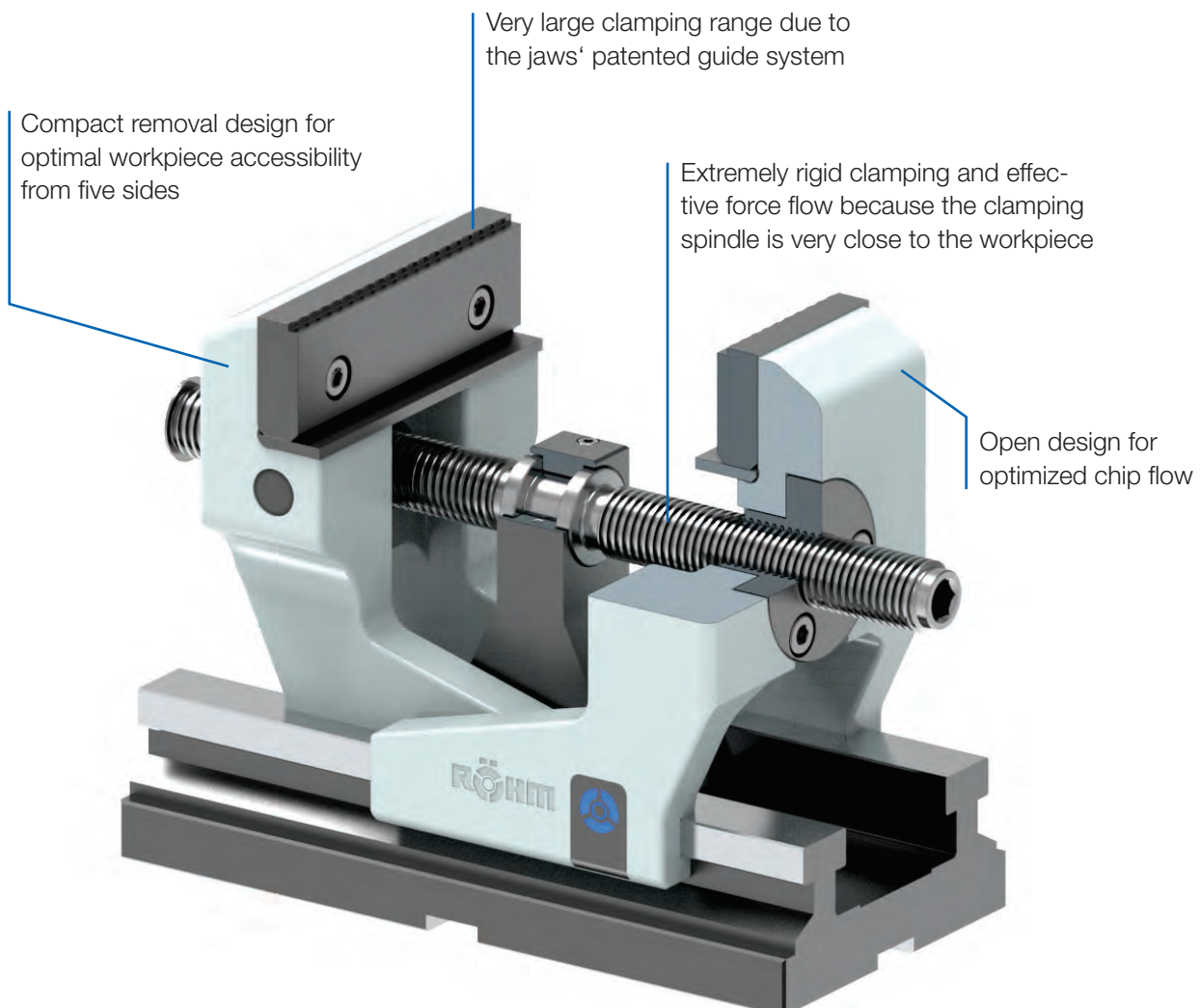
Video RZM

NC-COMPACT SELF CENTERING VICES

Thanks to its compact and robust design, the NC-compact self centering vices from RÖHM have a minimal interference contour, enabling optimal workpiece accessibility in 5-axis machining. Two movable clamping jaws ensure a constant clamping force, high repeatability and large clamping stroke.

ADVANTAGES AT A GLANCE

- ⊕ Ideal for 5-axis machining due to its minimal collision contour
- ⊕ Hardened and ground on all sides for long service life
- ⊕ Constant clamping force and high repeatability



RZM - central, without power transmitter



APPLICATION

Optimized for 5-axis machining.

TYPE

Clamping system mechanical without power transmitter, manually operated.

Centric clamping with two moving jaws.

CUSTOMER BENEFITS

- ③ Ideal guidance characteristics of the jaws thanks to patented guidance system
- ③ Very large clamping stroke
- ③ Open design for optimized chip flow, which permits easy cleaning, even after heavy duty machining
- ③ Constant clamping force for every clamping operation and high clamping repeatability when a torque wrench is used
- ③ Optimally suitable for use of SKB clawed jaws. These top jaws can securely clamp raw and sawed parts with a max. strength of up to 900 N/mm² to a cutting depth of 2.5 mm

TECHNICAL FEATURES

- Steel basic body hardened and ground
- Highly positioned clamping jaw
- Top spindle lying near the clamping jaws for optimal force transfer
- Long jaw guide and compact design
- Including SKB clawed jaws
- Clamping repeatability 0.02 mm

RZM = RÖHM, central, manual

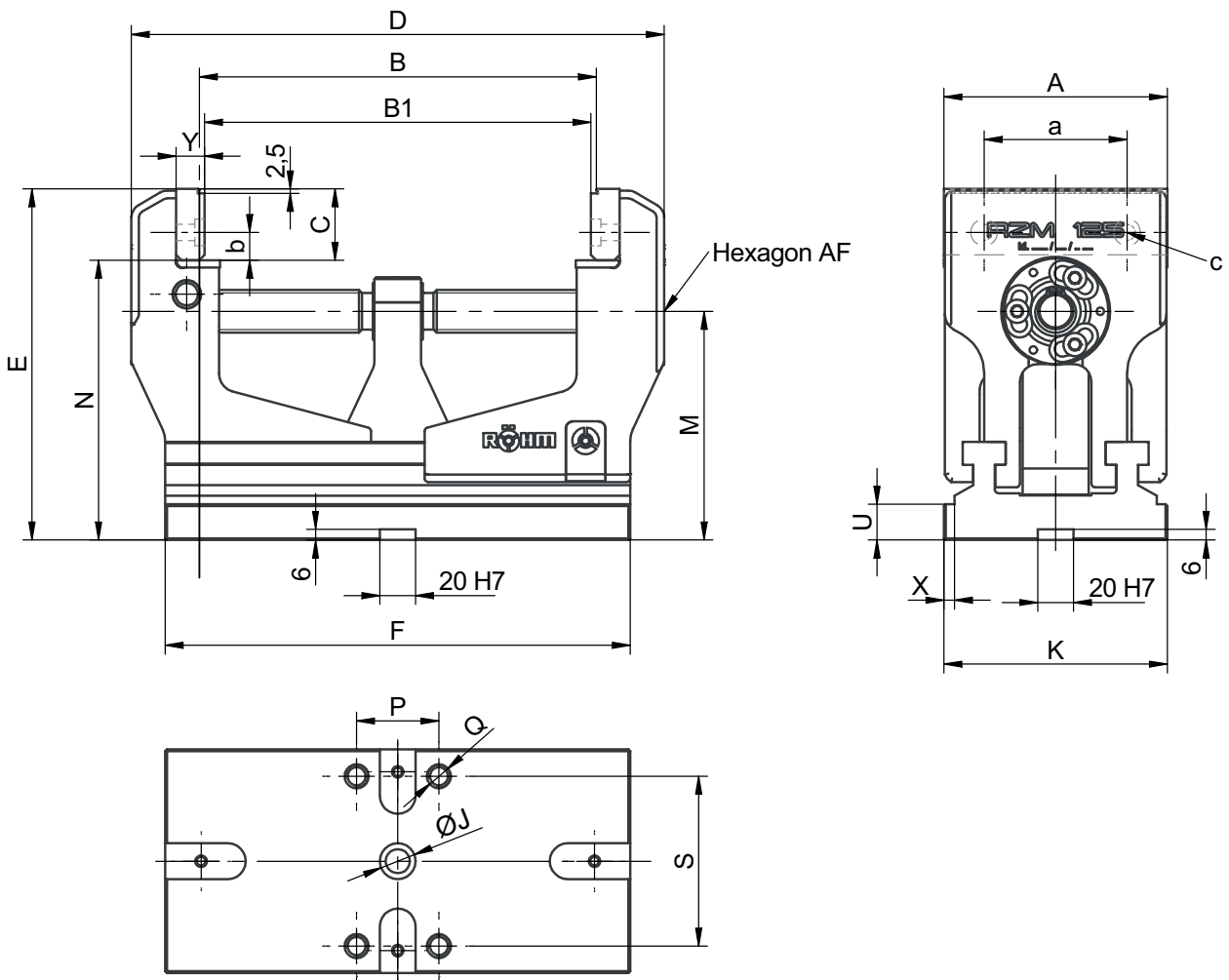
A32
RZM, with SKB clawed jaws

Item no.	182230	182231	178910	178911
Jaw width A mm	92	92	125	125
Design	long design	short design	long design	short design
B min.	24	24	23	23
B max.	160	100	222	142
B1 mm	18-154	18-94	17-216	17-136
C mm	32	32	40	40
D mm	230	170	298	218
E mm	174	174	196,5	196,5
F mm	200	200	260	180
Ø J x depth mm	Ø20 ^{H7} /6	Ø20 ^{H7} /6	Ø20 ^{H7} /6	Ø20 ^{H7} /6
K mm	94	94	125	125
M mm	120	120	128	128
N mm	142	142	156,5	156,5
U mm	20	20	20	20
X mm	6	6	6	6
Hexagon AF	10	10	12	12
Clamping force kN	20	20	25	25
Tightening torque Nm			150	150
Weight kg	11,7	11,5	20,3	17,4

RZM - central, without power transmitter



NC-Centric clamping vices RZM



Accessories RZM

A37

Claw jaws SKB without step, universal for clamping depth > 2.5 mm



Item no.	Contents of delivery	Size	Width mm	Height mm	Thickness mm
166661 ▲	set	92	92	32	14
166667	set	125	125	40	16

Including fixing screws

A37

Claw jaws SKB with fine step, 2.5 mm clamping depth



Item no.	Contents of delivery	Size	Width mm	Height mm	Thickness mm
166514	set	92	92	32	14
166520	set	125	125	40	16

Including fixing screws

A37

Normal jaw SGN, one side smooth, one side grooved, both sides ground



Item no.	Contents of delivery	Size	Width mm	Height mm
162363	set	92	92	31,6
158897	set	125	125	39,7

Including fixing screws

A37

Normal jaw finely checkered SGNf, reversible, to increase the specific contact pressure (higher holding forces), one side finely checkered, one side longitudinally grooved

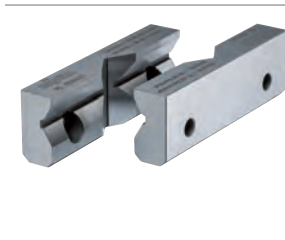


Item no.	Contents of delivery	Size	Width mm	Height mm
163223	set	92	92	32
163225	set	125	125	39,7

Including fixing screws

A37

V-jaw PB, horizontal and vertical



Item no.	Contents of delivery	Size	Width mm	Height mm	Thickness mm	Height prism mm	Chuck capacity mm	
							horizontal	vertical
162365 ▲	set	92	92	32	16	19,5	12-36	12-36
158641	set	125	125	40	20	24	15-40	18-60

Accessories RZM

A37

Normal jaw SGNA, with movable workpiece stop, hardened and ground



Item no.	Contents of delivery	Size	Width mm	Height mm
150739▲	piece	92	113	31,6
150740▲	piece	125	135	39,6

Including fixing screws

A37

V-jaw and standard jaw SBO, unhardened and burnished, with workpiece support



Item no.	Contents of delivery	Size	Width mm	Height mm	Chucking capacity mm	
					Horizontal	Vertical
317259	set	92	110	31,8	3-12	5-32
317260	set	125	135	39,8	3-13	6-40

Including fixing screws

A37

Spindle, for shortening the clamping range of the long RZM version



Item no.	Contents of delivery	Size	Length mm	Diameter mm
178958	piece	125	218	24
182233	piece	92	168	24

A37

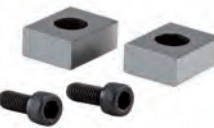
Single clamp SPE, for mounting vices on end and on the base



Item no.	Contents of delivery	T-slot	Thread
149121	piece	12	M10x50
149122	piece	14	M12x55
149123	piece	16	M12x60
149124	piece	18	M16x60
155722	piece	20	M16x65
151507	piece	22	M16x65

A37

Fixed slot nuts NTS, hardened and ground, with fixing screw



Item no.	Contents of delivery	Size	Length mm
014823	set	20x12	22
014825	set	20x14	25
014827	set	20x16	25
014829	set	20x18	25
014831	set	20x20	22
014833	set	20x22	32

A26

Torque wrench



Item no.	Torque Nm	Length mm	Output	Working accuracy
10004116	20-120	435	12,7=1/2"	3%
10004117	60-320	659	12,7=1/2"	3%

A99

Screwdriver bit for torque wrench



Item no.	Size	Key-width SW	Output
1339728	92	10	1/2"
1339729	125	12	1/2"